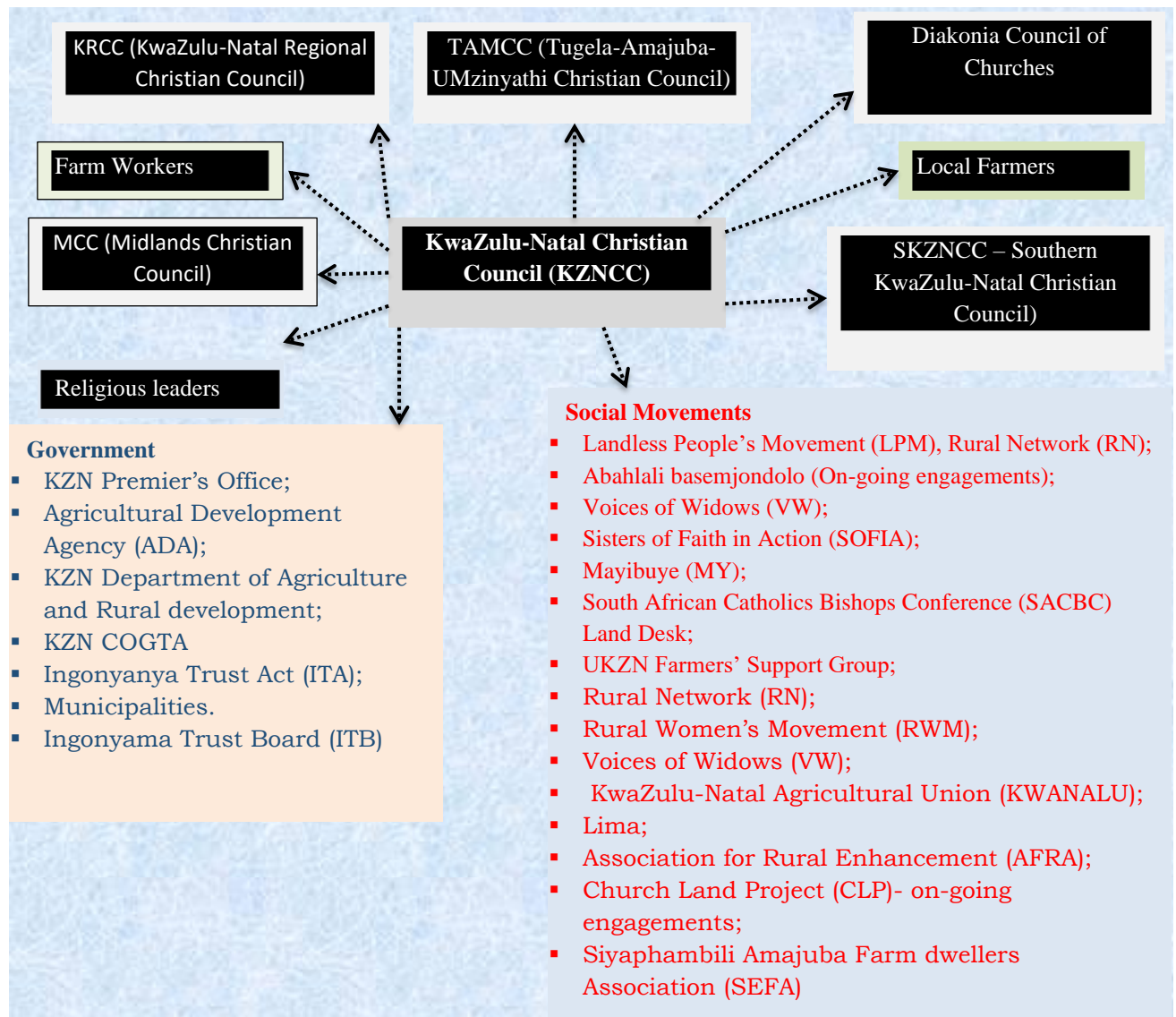


## LAND ISSUES PROGRAMME NETWORK \* INTERNAL AND EXTERNAL ACTORS

The KwaZulu-Natal land issues programme consists of the following stakeholders as listed on figure 1 below. The interventions by KZNCC will ensure that these stakeholders play a role in promoting a peaceful land rights and conflict resolution in KwaZulu-Natal farming communities.

Figure 1: KwaZulu-Natal Land Issues Programme Stakeholder Matrix



The KwaZulu-Natal Land issues will put greater focus on traditional leaders, Ingonyama Trust Board, Department of Land Affairs and Rural Development as well as on Churches and Local Municipalities with regards to slow pace of land distribution and the need to develop policies that will enable a faster pace of land distribution and support to those allocated land.